



OM SANA  
HEALTH

Immunotherapy, Alternative and Complementary Cancer Therapies



*"Before you cure someone, ask him if he is willing to give up the things that made him sick."*

– Hippocrates

---

*"Illnesses do not come upon us out of the blue. They are developed from small daily sins against Nature. When enough sins have accumulated, illnesses will suddenly appear."*

– Hippocrates

---

*"A man is ill, but the illness is nature's attempt to heal him"*

– Dr. Carl Jung

---

*"Stay close to nature and its eternal laws will protect you."*

– Dr. Max Gerson.



OMSANA • HEALTH

# WHO ARE WE?

We are a clinic specialized in the treatment of cancer and other chronic diseases, using an integrative holistic approach in an out-patient modality.

Our treatments come from natural components, and they are recognized for having anti-cancer properties with minimal side effects compared to conventional therapies.

We have more than 26 types of therapies focused on the treatment of cancer and its symptoms.

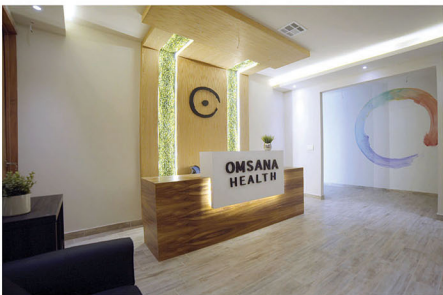
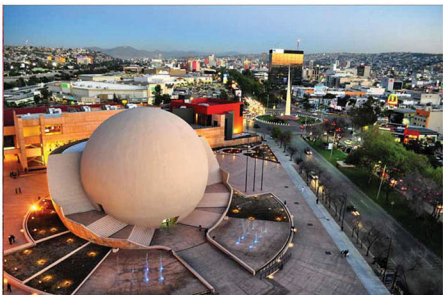
We aim for you to have a strong understanding of your current health situation and craft an educational approach for a new lifestyle. We also want to ensure you have a positive experience, consistently supported by a team skilled in care, service, and quality, always prioritizing the patient's well-being.

---

# OUR GOAL

Our objective is to enhance the quality of life by targeting cancer cells for potential healing, addressing the emotional needs of individuals with cancer in a comfortable setting, and ensuring they are overseen by seasoned medical professionals.





## A HOLISTIC AND NATURAL OPTION NEXT TO YOU.

- We are located in Tijuana, Mexico, only 5 minutes south of the San Diego border.
- Tijuana is one of the main medical tourism cities in the world.
- In 2019 alone, 2.5 million people came to Tijuana to receive different types of treatment, with an economic spillover of between 1.5 and 2 billion dollars per year. The geographic location, the variety of treatment, and the affordable prices compared to the United States, make Tijuana a very attractive place to seek medical treatments.
- Omsana Health is situated in the Tijuana medical district of Zona Rio. Its close proximity to the border offers easy access to medical services, positioning us as a convenient choice for holistic cancer treatments.





# FACILITIES

- Our facility is designed to provide an intimate and personalized patient experience, where the patient will feel like home in a comfortable and safe environment, allowing them to focus on their healing journey.
- Omsana Health Health is situated in a medical tower, offering nearby access to various other medical services within the building, separate from Omsana Health.
- Comfortable and spacious IV room
- Personalized attention for up to 8 patients at a time
- Hyperthermia pod
- Enema cabin
- Consultation rooms
- Nursing station
- Training and multipurpose room



# MEET THE ENEMY

## CANCER

Cancer is a chronic degenerative condition in which cells in our body proliferate uncontrollably and abnormally, disrupting our body's function and structure, ultimately leading to its breakdown.

## TYPES OF CANCER:

Cancer types are categorized based on the tissue of origin. They can manifest as solid tumors in organs like the lungs, colon, prostate, breast, pancreas, stomach, liver, and so on, or they can affect blood cells, as seen in leukemias and lymphomas.

1,806,590

ESTIMATED NEW  
CANCER CASES WILL BE  
DIAGNOSED IN 2020.

SOURCE: AMERICAN  
CANCER SOCIETY, 2020.

60%

OF CANCER  
PATIENTS ARE 65  
AND OLDER.

40.1%

PROBABILITY MEN IN U.S. WILL  
FACE AN INVASIVE CANCER  
DIAGNOSIS IN THEIR LIFETIME.

SOURCE: AMERICAN CANCER  
SOCIETY, 2020.

606,520

ARE EXPECTED TO DIE  
FROM CANCER IN 2020.

SOURCE: AMERICAN  
CANCER SOCIETY, 2020.

2<sup>ND</sup> LEADING CAUSE  
OF DEATH IN US IS  
CANCER BEHIND  
HEART DISEASE



SOURCE: CENTERS FOR DISEASE  
CONTROL AND PREVENTION.



OMSANA • HEALTH

# OPTIONS OF TREATMENTS TODAY

*There are two main types of approaches to treating cancer:*

## CONVENTIONAL TREATMENTS:

Chemotherapy, radiotherapy, surgery.

## ALTERNATIVE TREATMENTS:

Immunotherapies such as hyperthermia, high-dose vitamin c, insulin potentiated therapy, intravenous ozone, vitamin B17, cell therapy, mushroom therapy, anti-cancer diets and supplements, resveratrol, cannabis, etc.

### ADVANTAGES:

- Support by the scientific and pharmaceuticals community
- Wider distribution of results due to the acceptance within this community
- Conventional treatments are available in most countries around the world

### ADVANTAGES:

- Natural approach with minimal side effects
- Targets the tumor and protects healthy cells in the rest of the body
- Better response to treatment when patient has not yet received conventional cancer care

### DISADVANTAGES:

- Extremely high cost of treatments
- Severe, life-threatening side effects in the whole body
- High cancer recurrence rates

### DISADVANTAGES:

- Low approval by conventional physicians
- Difficult to obtain in most countries
- Less dissemination of results.
- Treatment protocols are not covered by most health insurances

**“One third of cancer patients are confident in the effectiveness of alternative treatments.”**

# TYPES OF CANCER WE ACCEPT

• Adenocarcinoma	• Kidney Cancer	• Small Intestine Cancer
• Adrenal Cancer	• Leukemia	• Squamous Cell Carcinoma
• Anal Cancer	• Liver Cancer	• Stomach Cancer
• Appendix Cancer	• Lung Cancer	• Testicular Cancer
• Bile Duct Cancer	• Lymphoma	• Throat Cancer
• Bladder Cancer	• Melanoma	• Thyroid Cancer
• Bone Cancer	• Mesothelioma	• Urethral Cancer
• Breast Cancer	• Metastatic Squamous Neck Cancer	• Uterine Cancer
• Carcinoid Tumors	• Multiple Myeloma	• Vaginal Cancer
• Cervical Cancer	• Non-Hodgkin Lymphoma (NHL)	• Vulvar Cancer
• Colorectal Cancer	• Oral Cancer	
• Esophageal Cancer	• Ovarian Cancer	
• Gallbladder Cancer	• Pancreatic Cancer	
• Gastrointestinal Stromal Tumors (GIST)	• Prostate Cancer	
• Head and Neck Cancer	• Sarcoma	
• Hodgkin Lymphoma	• Skin Cancer	





# HEAVY COST OF CANCER TREATMENTS

AVERAGE MONTHLY  
INCOME  
PRE-TAX



**\$3,600**

AVERAGE MONTHLY  
COST OF CANCER  
TREATMENTS



- **Chemotherapy**  
\$1,000 - \$12,000
- **Radiation**  
\$9,000
- **Immunotherapy**  
\$10,000 - \$12,500



NEWLY APPROVED CANCER DRUGS COST AN AVERAGE OF \$10,000 PER MONTH, WITH SOME AS HIGH AS \$30,000 PER MONTH. JUST OVER A DECADE AGO, THE AVERAGE WAS \$4,500.

SOURCE: AMERICAN SOCIETY OF CLINICAL ONCOLOGY, 2015

Sources: U.S. Bureau of Labor Statistics, 2018; Drug Pricing Lab, 2019; JAMA Oncology, 2019



OMSANA • HEALTH


# OMSANA HEALTH THERAPIES

*With our program we seek to:*

- Strengthen the patient's immune system
- Activate an immune response that triggers an effective anti-tumor effect
- Cause direct damage to the cancer cells with targeted therapies that destroy the tumor and heal the rest of the body.

**From a physical perspective**, we combine the most powerful alternative methods for cancer treatment, overseen by professional medical experts.


**From a psychological, emotional, and spiritual standpoint**, we adopt an oriental dualistic philosophy emphasizing the need for both body and mind to be in balance in order for the body to naturally heal.

 NUTRITION

 IMMUNOTHERAPY

 METABOLISM

 CELLULAR THERAPY

 CANNABIS AND CANCER

 EMOTIONAL



# OUR THERAPIES

## ■ NUTRITION APPROACH

### ■ GERSON THERAPY:

The Gerson Therapy emphasizes a diet rooted in an organic vegan regimen, meticulously crafted using precise cooking methods to retain maximum nutrients and tailored to the patient's requirements. It incorporates the intake of natural juices from organically cultivated fruits and vegetables, coupled with organic coffee enemas to boost the liver's detoxification process. Additionally, dietary supplements like niacin or pancreatin are introduced to aid in nutrient absorption.



---

## ■ METABOLIC APPROACH

### ■ VITAMIN C/K3 THERAPY (APATONE):

Administering high concentrations of Vitamin C together with Vitamin K3 in cancer treatment has shown to activate specific biochemical pathways that lead to the targeted death of cancer cells. Additionally, this therapy promotes collagen production in the extracellular matrix of immune cells, enhancing their structural stability and thereby boosting their effectiveness.

### ■ AMYGDALIN OR VITAMIN B17:

Amygdalin, known as Laetrile in its synthetic form, is a cyanogenic compound, meaning it produces cyanide. Cancer cells have a particular affinity for this compound, which is essential for targeting the cytotoxic effects of the cyanide produced. This compound not only stimulates the immune system by activating immune cells and releasing immune-modulating molecules but also induces cytotoxic responses and impedes metabolic pathways within cancer cells.

## ■ INTRAVENOUS OZONE:

Ozone acts in the metabolism of oxygen, affects the hemoglobin dissociation curve increasing the availability of oxygen in our organism, increases the transmembrane transport of oxygen to the intracellular space, stimulates erythropoiesis which is the production of red blood cells. In the immune system, it stimulates the release of molecules that modulate the antitumor immune response such as IFN, TNF and IL-2.

## ■ RESVERATROL PROTOCOL:

The studies with Resveratrol have shown effects in inhibiting the growth of cancer cells, the induction of organized death in this type of cells (apoptosis), in addition to modulating the tumor microenvironment by interfering with the creation of blood vessels to nourish the tumor, inhibiting the HIF-1 $\alpha$  factor involved in angiogenesis in our body.

## ■ MYERS COCKTAIL:

The Myers Solution, a formula composed of vitamins, electrolytes and essential amino acids that has proven effective in treating chronic fatigue syndromes, migraines, depression, allergic reactions.

## ■ METFORMIN PROTOCOL:

The indirect effects are related to how Metformin regulates sugar and insulin levels in our body, because high levels of insulin and sugars create an environment that favors tumor growth.

The direct effects of Metformin against cancer are related to the activation of the AMPK enzyme complex, this enzyme complex induces a stimulation in tumor suppression genes, such as LKB1 or the famous p53 gene considered the "guardian of the genome".





# ■ CELLULAR THERAPY APPROACH

This approach consists of a series of Immunologic Cellular Vaccines also called Autologous Vaccines since they are made from the patient's own immune cells.

## OMSANA HEALTH'S PROGRAM HAS THREE VARIATIONS OF AUTOLOGOUS VACCINES:

### ■ DENDRITIC CELL VACCINE:

Dendritic cells are the cells that initiate the antibody production process in the adaptive immune response, which gives our body the ability to generate specific immune responses. In addition, these cells activate other immune cells such as CD8+ cytotoxic lymphocytes, Natural Killer cells or macrophages, boosting the immune response to any threat to the body.

This vaccine is made from the patient's own dendritic cells, the sample is processed in the laboratory where we increase the number of these cells and perform a specific activation, and then we apply them to the patient to boost his immune response, thus enhancing the patient's immune response.

### ■ LYMPHOKINE-ACTIVATED KILLER CELLS VACCINE:

The killer cells in our immune system are a group of cells that are capable of directly eliminating any threat to our body through different cytotoxic mechanisms. This group is formed by Natural Killer Cells and CD8+ Cytotoxic Lymphocytes.

This autologous vaccine is made from the same immune cells of the patient to be multiplied and activated with IL-2, a special lymphokine that activates their immunological cytotoxic activity in the body.

### ■ TUMOR-INFILTRATING LYMPHOCYTES (TIL) VACCINE:

The presentation of tumor antigens to lymphocytes is crucial for a targeted immune response. In this treatment approach, lymphocytes that have previously encountered tumor antigens are utilized, as they are found within the tumor and are pre-conditioned to focus their immune response on these specific antigens. To prepare this vaccine, a tumor sample is required to obtain the tumor-infiltrating lymphocytes, which are then processed in a lab setting.

---

## ■ IMMUNOLOGICAL APPROACH

### ■ COLEY'S VACCINE:

Created by Dr. William Coley, considered the father of immunotherapy. This vaccine contains Liposaccharides (LPS) from two bacterial species capable of producing a systemic immune response by activating Toll-like receptors located on the membrane surface of immune cells such as CD8+ lymphocytes, macrophages, and natural killer cells.

There is also the release of different molecules that contribute to the antitumor immune response, such as interferon-gamma (IFN- $\gamma$ ), Tumor Necrosis Factor-alpha (TNF- $\alpha$ ), and interleukin-2 (IL-2).

### ■ GC-MAF (GC-MACROPHAGE ACTIVATING FACTOR):

This is a protein that stimulates the activity of macrophages, an immune cell line of great importance in the antitumor response. By activating macrophages we can have an M1 response, this is the response responsible for tumor suppression by activating the cytotoxic activity of macrophages against cancer cells as well as the release of immunomodulatory molecules such as IL-12, Tumor Necrosis Factor-alpha- (TNF- $\alpha$ ).

### ■ NATURAL KILLERS CELLS ACTIVATORS

Selenium Protocol:

Selenium stimulate the lymphocyte cell line especially the Natural Killer Cells, promote cell phagocytosis in our body, and stimulate the migration of immune cells to the area of injury.

Protocol with Melatonin:

Melatonin is a molecule that we produce naturally in our body and is related to our circadian cycle, the sleep cycle, the anti-cancer activity related to Melatonin is based on the stimulation of Natural Killer cells, the production of interleukins such as IL-2, IL-6, IL-12 and Interferon gamma (IFN-  $\gamma$ ).

### ■ HYPERTHERMIA

In this therapy the body is exposed to a temperature between 39-45 °C, at these temperatures the DNA structure of the cancer cells is damaged promoting their death, in addition, Hyperthermia activates an immune response through the expression of proteins called Heat Shock Proteins 70 (HSP70) that activate Toll-like receptors on the surface of immune cells.

This therapy is a great complement to other therapies, the heat modifies the circulation of the tumor microenvironment increasing oxygenation as well as increasing drug delivery to the tumor site. This therapy is recommended to be used in conjunction with high doses of Vitamin C, IPT, or Laetrile.

### ■ INSULIN POTENTIATED THERAPY (IPT) WITH LOW DOSES OF CHEMOTHERAPY.

Insulin-potentiated therapy takes advantage of the metabolism of cancer cells, which use a large amount of glucose, this excessive use of glucose in cancer cells is also known as the Warburg effect. By combining insulin with low doses of chemotherapy (15-25%), we can increase the entry of chemotherapy into cancer cells thanks to the effects that insulin has on their cell membrane, specifically damaging cancer cells and considerably reducing the side effects of chemotherapy on healthy cells.



## ■ THERAPY WITH ORIENTAL MUSHROOM EXTRACTS

### ■ MAITAKE MUSHROOM (*GRIFOLA FRONDOSA*):

Research on the Maitake mushroom has isolated a bioactive substance called Maitake D-Fraction. This D-fraction is a molecule that has been shown to be bioactive in the body, activating the immune system and triggering an antitumor response by stimulating specialized cells and releasing cytokines.

### ■ SHIITAKE MUSHROOM (*LENTINUS EDODES*):

Shiitake Mushroom or *Lentinus Edodes* is the second largest cultivated and the most popular edible mushroom in the world known as “Xianggu” in China and “Shiitake” in Japan. Its anticancer effects were described in the 1960s, when it was possible to isolate the  $\beta$ -Glucan molecule, which is the bioactive agent that produces the antitumor response in our system.

### ■ REISHI MUSHROOM (*GANODERMA LUCIDUM*):

Reishi mushroom or *Ganoderma lucidum* (*G. lucidum*) is a natural medicine that is widely used and recommended by Asian physicians for its supporting effects on immune system. Laboratory research and a handful of preclinical trials have suggested that *G. lucidum* carries promising anticancer and immunomodulatory properties.



## ■ CANNABIS AND CANCER APPROACH

### ■ CANNABIS:

- Rick Simpson Oil (RSO)
- CBD
- Analgesic properties, Appetite stimulation, Muscle relaxant, Anxiolytics and Sleep inducer.

### Antitumor Effects:

There are cases and testimonies where an antitumor effect and growth inhibition of cancer cells in certain patients is reported, but it is still under investigation.

## ■ EMOTIONAL APPROACH

At Omsana Health, prioritizing the emotional well-being of the patient is fundamental for the program's effectiveness, fostering swift and enduring shifts in their new lifestyle. The Mind Soul methodology enhances the medical treatments by focusing on the management of both conscious and subconscious thoughts, purification and channeling of vital energy, and the balancing of subtle energies. This is achieved through the following therapies:

### ■ MEDITATION:

Meditation is a technique where individuals train their minds or cultivate a specific type of awareness, either for a distinct advantage—like mentally acknowledging thoughts without becoming attached to them—or for a particular objective. The concept of meditation spans a wide range of practices, including methods designed to relax, harness inner energy or life force, and foster qualities like compassion, love, patience, generosity, and forgiveness. An especially profound form of meditation seeks to attain uninterrupted, deep concentration, aiming to empower the practitioner to experience a sense of well-being in all aspects of life.

### ■ QIGONG:

"Managing Vital Energy" or "The skill of directing vital energy optimally based on its intended use" relates to an array of techniques typically associated with traditional Chinese medicine. These techniques encompass the mind, breath, and physical activity. While Qigong is predominantly practiced for health preservation, in certain situations, particularly in China, it may also be recommended for distinct therapeutic objectives.

### ■ AROMATHERAPY:

The scents we breathe in can evoke specific emotions or even trigger memories of places, moments, or individuals due to the instant connections our brain makes with the detected aroma. The aromas of 100% natural essential oils can assist in physical recuperation or emotional regulation. They can even aid in reshaping cellular memories by engaging with our brain's limbic system, which is responsible for directing all of our body's functions.

### ■ SPECIFIC THERAPIES WITH ESSENTIAL OIL:

Harnessing the medicinal qualities of plants, extracted into essential oils either individually or in blends, aids in enhancing physical and emotional health naturally. This process accustoms the body to natural healing, initiating a detoxification process and effective emotional regulation at the cellular level, ultimately resulting in a reduction of ailments.



## ■ SUBCONSCIOUS PROGRAMMING:

The subconscious predominantly influences the choices we make. It operates behind the scenes, dictating our actions based on programming that has unconsciously and involuntarily been embedded in our brains throughout our lives. That's why our therapy also incorporates reprogramming to alter behavioral patterns, aiding the healing journey.

## ■ SOUND THERAPY:

We work with the Solfeggio frequencies, discovered in the 70s, which are designed to stimulate our brain for specific functions improving physical, emotional, and mental health. Either as ambient music or binaural frequencies with headphones which will directly stimulate our conscious and subconscious minds to provoke positive and self-healing moods.

## ■ SOUND AND VIBRATION OF SINGING BOWLS FOR HEALING:

Beyond offering soothing tunes, the vibrations from singing bowls contribute significantly to enhancing both the ambiance and our well-being by harmonizing environmental oscillations. The profound impact that these bowl vibrations have on the body is undeniably beneficial. This art form blends meditation with acoustic resonance to create equilibrium in environmental frequencies, which, based on this philosophy, promotes both physical and mental healing. Benefits include stress relief, anxiety reduction, heightened concentration, enhanced mental clarity and creativity, and management of insomnia and hyperactivity, among others.



*"Our body is permeated by the spirit.  
Everything that takes place in our body  
are movements of the spirit."*

*Bert Hellinger*





# 3 WEEK PROGRAM

## ■ NUTRITIONAL APPROACH:

- Gerson Therapy
- Coffe enemas
- Supplements
- Modified Gerson diet

## ■ METABOLIC APPROACH:

- High dose of Vitamin CK3
- Laetril (*Amigdalín*) B17
- Ozone IV
- Resveratrol protocol
- Metformin protocol
- Myers cocktail IV

## ■ IMMUNOLOGIC APPROACH:

- Coley Vaccine
- Natural Killers cell activators
- Oriental mushroom extract (*Maitake, Shiitake and Reishi*)
- GC-MAF (*Gc protein-derived macrophage activating factor*)
- Hyperthermia



## ■ CANNABIS AND CANCER APPROACH:

- Rick Simpson Oil (RSO)
- CBD

## ■ EMOTIONAL APPROACH:

- Aromatherapy with essential oils
- Subconscious programming
- Qigong
- Meditations
- Sound Therapy with Singing Bowls
- Sound Therapy with Music

## ■ SERVICES INCLUDED:

- Assigned doctor - Daily consultations
- 24/7 medical line assistance during your stay
- Nurse service in the therapy room
- Weekly blood work (3)
- 1 Ultrasound
- 1 X-Ray
- 1 Nutritionist evaluation
- 2 meals daily (*breakfast and lunch*)
- Transportation hotel-clinic-hotel
- New Lifestyle Workshops
- Aftercare online assistance



\*OTHER THERAPIES AVAILABLE AT ADDITIONAL COST.

\*THIS PROTOCOL MAY CHANGE ACCORDING TO THE NEEDS OF EACH PATIENT.

# WHY OMSANA HEALTH?

WE PROVIDE MORE VALUE THAN OTHER INTEGRATIVE  
CANCER CENTERS:

- More than 20 therapies and 10 services in our 3 week program.
- Nearly 50% more treatments than comparable services in the United States and an average of 30% more than similar local services available.
- Approximately 50% less expensive than similar treatments in the United States.
- Outpatient Modality: While lodging isn't included, you have the flexibility to save money by selecting an accommodation that fits your budget. We offer special rates at nearby hotels for our patients.
- Specifically emphasizing mental and spiritual healing, along with energy management, as an integral part of the overall therapy.

**\$21,000 USD for 3 WEEK PROGRAM**

*Recommended time 3 weeks*

***We are an excellent choice for you!***

\*SEE CURRENT TERMS AND CONDITIONS

\*RESTRICTIONS APPLY FOR PROGRAMS SHORTER THAN 3 WEEKS

\*ADDITIONAL TREATMENTS LIKE IPT ARE NOT INCLUDED IN THE BASIC 3-WEEK PROGRAM

\*THE MEDICAL DOCTOR MAY RECOMMEND A WEEKLY PROTOCOL STARTING AT \$7,000 IN ADDITION TO THE 3-WEEK PROGRAM BASED ON THE PATIENT'S RESPONSE TO TREATMENT.



OMSANA • HEALTH



# BECOME OUR PATIENT

1

Schedule a free consultation with our doctors to review your case at our webpage

<https://omsanahealth.com>

2

Send us your necessary information for evaluation described in the next page of this document to the following email before your appointment:

[info@omsanahealth.com](mailto:info@omsanahealth.com)

3

Receive your personalized budget according to your case.

4

Accept to be our patient.

5

Complete your registration process.

6

Our team will contact you to coordinate all the details of your stay and treatment.

7

Start your remission journey.



# INFORMATION NEEDED FOR MEDICAL EVALUATION

*The candidate's admission will depend on the medical evaluation by one of our physicians.*

## INFORMATION NEEDED FOR EVALUATION:

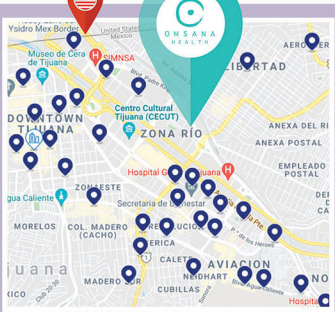
- Biopsy report
- History of treatment during cancer (*type of chemotherapy and cycles received, radiotherapy sessions, hormonal therapy, monoclonal antibodies*).
- Reports of imaging studies, MRI, CT, PETscan, Ultrasound.
- Last 2 blood tests
- History of surgeries, evolution and complications.
- Accompanying diseases (*diabetes, hypertension, epilepsy, hypothyroidism, etc.*).
- Medications currently taken.



# WHERE TO STAY

Omsana Health operates as an outpatient treatment center without providing lodging. This flexibility allows you to select the accommodation option that best aligns with your budget and preferences.

We'll guide you to lodging options near the clinic, which you can explore on the respective apps or directly with the hotel.



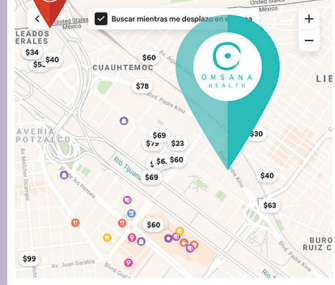
A map of Tijuana, Mexico, with a large teal Omsana Health logo in the center. A red location pin is placed near the US-Mexico border. Numerous blue location pins are scattered across the city, representing hotel locations. The map shows various neighborhoods like Downtown Tijuana, Zona Rio, and Avenida. A search bar at the top left contains the text "Buscar mientras me desplazo".

**Booking.com** **Expedia**

**FROM \$35 TO \$200USD**

Average price per night in nearby hotels. We have special rates for our patients at the following hotels:

- Quartz
- Pueblo Amigo
- Real Inn
- City Express Río



A map of Tijuana, Mexico, with a large teal Omsana Health logo in the center. A red location pin is placed near the US-Mexico border. Numerous colorful location pins (purple, orange, yellow) are scattered across the city, representing Airbnb accommodation locations. The map shows various neighborhoods like Leados Erales, Cuauhtemoc, and Avenida. A search bar at the top left contains the text "Buscar mientras me desplazo".

**airbnb**

**FROM \$30USD**

Average price per night in nearby Airbnb accommodation.

Consult a specific date on Airbnb App for an accurate estimate.

*We will be happy to assist you with recommendations of the best options to improve your healing experience.*



# WELCOME KIT

## 3 WEEK PROGRAM

### KIT INCLUDES:

- 1 Travel bag
- 1 T-shirt
- 1 Enema kit
- 1 Weekly pillbox
- 1 Thermos for infusions
- 1 Notebook
- 1 Pen







## WHO COULD BE HELPED WITH THIS HOLISTIC APPROACH?

*Mainly:*

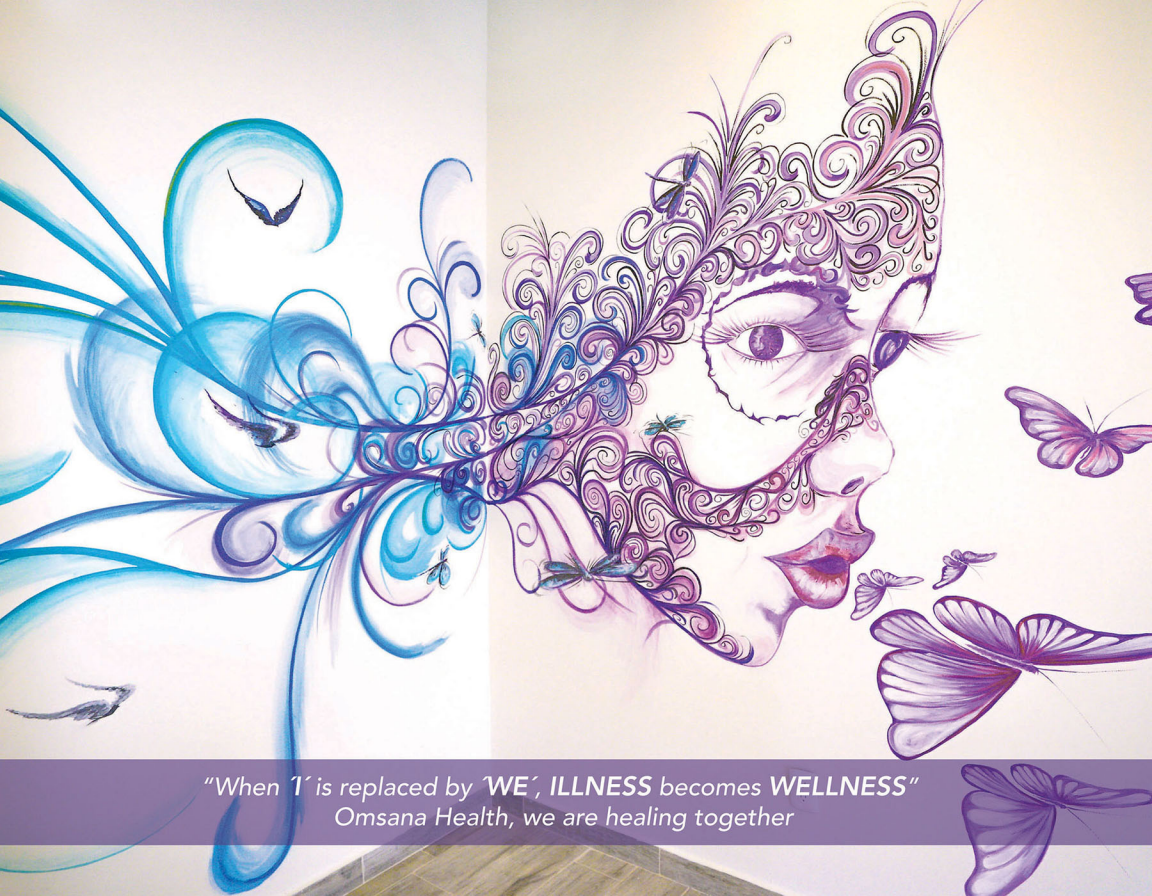
- Cancer patients seeking an alternative approach
- Patients needing immune support during conventional therapies (chemo, radiation, surgery).
- Patients currently in remission

*But also:*

- About 34% of cancer patients who contract COVID-19 will experience medium to long-term after-effects of the illness. Some of our treatments are effective in alleviating these symptoms and assisting in the patient's healing process.
- **Healthy patients** who want to strengthen their immune system and have a better life style.



OMSANA • HEALTH



*"When 'I' is replaced by 'WE', ILLNESS becomes WELLNESS"*  
Omsana Health, we are healing together

*Starting your path to holistic healing is just one step away.  
Begin by connecting with us at Omsana Health.*

*Take action today and reclaim your health.*

CONTACT US

e-mail: [info@omsanahealth.com](mailto:info@omsanahealth.com)

[www.omsanahealth.com](http://www.omsanahealth.com)



Torre Norte 2, Calle Fray Servando Teresa de Mier 1351 Interior 310, Zona del Río,  
Tijuana Baja California, C.P. 22010. México.